

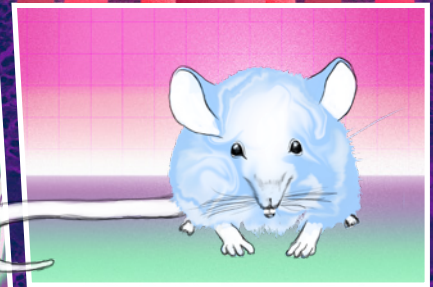
WHICH PATIENT TAKES CENTRE STAGE?

PLACING PATIENT VOICES
IN ANIMAL RESEARCH

A GRAPHIC ABSTRACT



Patient and public voices increasingly influence biomedical research



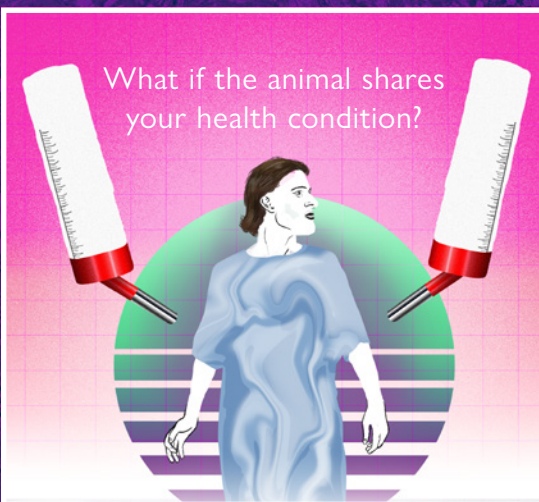
How are these voices shaped by encounters with animal research?



People are informing scientists of their research priorities



Does encountering animals add responsibility to speak for them too?



What if the animal shares your health condition?



Does art offer opportunities to support a conversation across these different perspectives?



How does this change your voice?

Animal research is based on a social contract that is changing as the place of patients in research shifts.

You can read more about these questions in Davies GF, Gorman R, Crudgington B (2019) Which patient takes centre stage? Placing patient voices in animal research. Chapter 10 in Atkinson S, Hunt R (Eds.) GeoHumanities and Health, Springer.



AnNex
Animal Research Nexus

animalresearchnexus.org

